



move | connect | experience

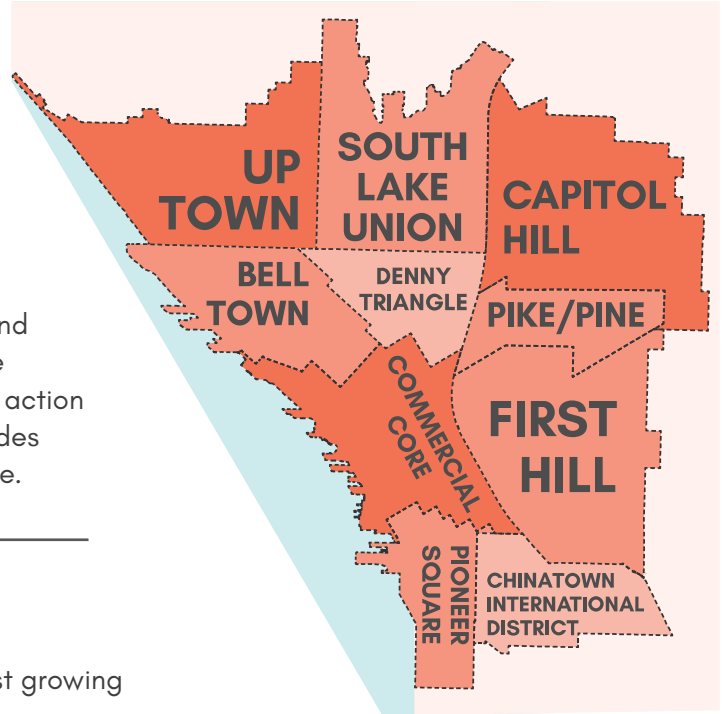
One Region. One Plan. One Center City.

Winter 2017

What is One Center City?

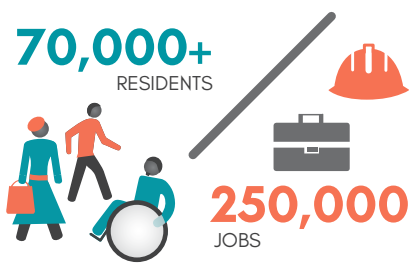
One Center City brings together many communities, perspectives, and partners to create a 20-year plan for how we move through, connect to, and experience Seattle's Center City neighborhoods.

Our region is growing fast, and how we get around is changing as well. To plan for the future, the City of Seattle, King County Metro (bus), Sound Transit (light rail and commuter bus), and the Downtown Seattle Association are working together. One Center City will create a near-term action plan and a 20-year vision that improves mobility and provides reliable travel options and great public spaces for everyone.



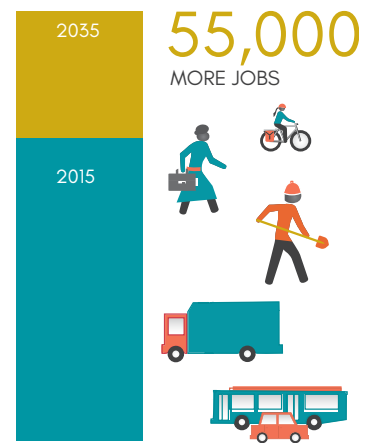
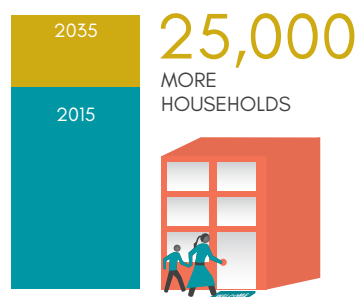
Center City Today

Center City includes 10 of Seattle's most populated, fastest growing neighborhoods.

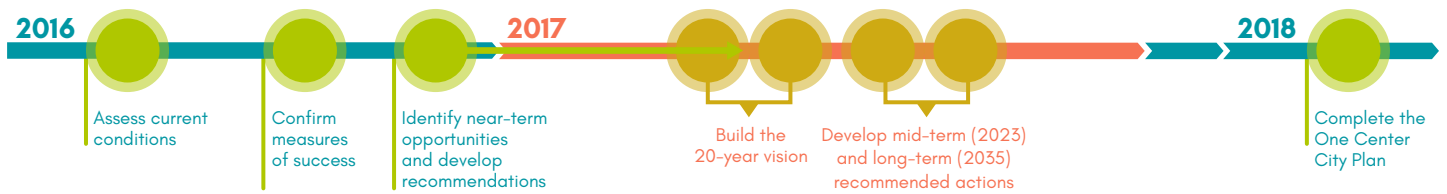


Center City in the Future

Seattle is growing. In the next 20 years, households and jobs are projected to continue growing in Center City. In addition, transit ridership is increasing and new light rail service is on the way, providing regional connections to Northgate (2021), Lynnwood and Overlake (2023) and Federal Way and Downtown Redmond (2024).



One Center City Timeline



How Can We Make it Easier to Move Around Now?

Public projects and private construction already in the works will affect how we get around Center City in the next several years. If we don't plan now, we can likely expect more delays, congestion, and crowds.

The partner agencies are working with the community to explore near-term strategies that could help keep Center City moving, including:

Surface Street Operations: Center City streets balance many priorities. Strategies would increase mobility by adding more lanes for transit or improving traffic signals.

Transit Service Restructuring: Bus routes that currently travel downtown could be connected to light rail. This would help keep transit riders moving and take advantage of more reliable transit service.

Pedestrian and Public Realm Improvements: Sidewalks and transit waiting areas could be improved to make it easier for pedestrians to travel to and through Center City and provide a more pleasant experience for transit riders.

Center City Bike Network Implementation: Protected bike lanes could be added to some Center City streets to give people better connected ways for getting to and through Center City.

Programs and Management Strategies: Strategies could include commute trip reduction efforts, parking and curb management, and other programs that help commuters and visitors get to their destinations more efficiently and ensure that businesses can deliver their goods quickly and easily.

The partner agencies will work with the public and key leaders to receive feedback on the potential near-term mobility strategies. Over the next year, King County and Sound Transit will conduct robust outreach efforts for any potential changes to transit service. The earliest that transit changes would be implemented is fall 2018.

What Will Center City Look Like in 20 Years?

In addition to developing strategies for improving mobility to and through Center City in the near-term, we'll also create a 20-year vision for improving transportation and the public realm for everyone—whether by foot, bike, freight, car or transit. Visit our website to learn more about the vision and how you can help us plan for the future.

In 20 years, how will we...

- move around our neighborhoods?
- connect to other parts of the City and the region?
- experience our streets and public places?
- get goods to our homes and businesses?
- use technology to move and experience our city?

For more information

To learn more about One Center City and the potential near-term mobility strategies, please visit

OneCenterCity.org

Accessibility

If you have any questions or comments, or if you need translation/interpretation services or accommodations for a disability, please email

info@OneCenterCity.org



 City of Seattle

 King County

 SOUNDTRANSIT

 Downtown Seattle Association